

DP World e Services

Bill of Lading Correction - Amend User's Manual

Copyright Information

Copyright © 2009 by Dubai Trade. All rights reserved

This document and all associated attachments mentioned therein are the intellectual property of Dubai Trade. This document shall be used only by persons authorized by DUBAI TRADE, for the purpose of carrying out their obligations under a specific contract with DUBAI TRADE. Unauthorized copying, printing, disclosure to third party and transmission of this document to any other destination by any media will constitute an unlawful act, attracting appropriate legal actions.

Control Document Notification

This is a controlled document. Unauthorized access, copying, replication and usage for a purpose other than for which this is intended are prohibited.

This document is being maintained on electronic media. Any hard copies of it are uncontrolled and may not be the latest version. Ascertain the latest version available with DUBAI TRADE.

Bill of Lading Correction -Amend

Dubai Trade



Document Details

Document Information

DOCUMENT NAME	Bill of Lading Correction - Amend
PROJECT NAME	DP World e Services User Manuals
BUSINESS UNIT	DP world
AUTHOR(S)	DT Training Dept.
LAST UPDATED DATE	18 th Oct 2009
CURRENT VERSION	1.1

Revision History

VERSION	DATE	AUTHOR	DESIGNATION	DESCRIPTION OF CHANGE
1.1	Feb 2010			Reviewed by DP World

Approval History

VERSION	DATE	NAME	DESIGNATION	COMMENTS
1.1	29 June 2010	Basil Al Kilani	Training manager	

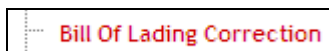
Distribution

VERSION	LOCATION

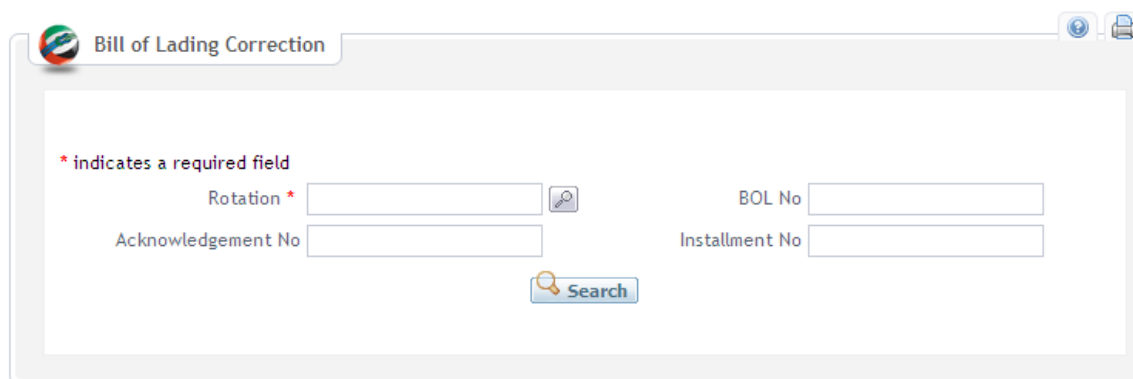
Bill of Lading Correction - Amend

This service enables you to correct errors in your uploaded BOLs

1. Go to **Amend > Bill of Lading Correction**



System asks you to search for a particular Rotation (required). You can further refine your search by using the other criteria (optional).



2. Enter **Rotation number**

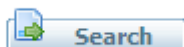
Rotation *

Or search for it from the magnifying glass button by Vessel name and/or Rotation number

Rotation * 

Vessel Name

Rotation



3. Entering Bill of Lading number, Acknowledgment number, Installment number helps in specifying your search results.

Bill of Lading Correction -Amend

Dubai Trade





Note: they are all optional fields.


Acknowledgement No	<input type="text"/>	BOL No	<input type="text"/>
		Installment No	<input type="text"/>

4. Click on **Search**

System displays all Bills of Lading which match the entered criteria

59 items found, displaying 1 to 15.[First/Prev] 1, 2, 3, 4 [Next/Last]

BOL No	Rotation	Installment No	Seq No	Acknowledgement No	Uploaded On	Correct	Delete
6	601643	10	4383831	A180708944	28-May-08 15:09	Duplicate	
48	601643	12	4383839	A180708979	28-May-08 16:16		
68	601643	13	4383862	A180709029	28-May-08 18:29		
69	601643	13	4383863	A180709029	28-May-08 18:29		
70	601643	13	4384025	A180709029	28-May-08 18:29		
71	601643	13	4383865	A180709029	28-May-08 18:29		
78	601643	13	4383872	A180709029	28-May-08 18:29		
79	601643	13	4383873	A180709029	28-May-08 18:29		
80	601643	13	4383874	A180709029	28-May-08 18:29		
81	601643	13	4383875	A180709029	28-May-08 18:29		
93	601643	13	4383887	A180709029	28-May-08 18:29		
94	601643	13	4383888	A180709029	28-May-08 18:29		
073815389	601643	13	4383852	A180709029	28-May-08 18:29	Duplicate	
82	601643	13	4383876	A180709029	28-May-08 18:29		
83	601643	13	4383877	A180709029	28-May-08 18:29		

 Delete all 59 BOLs

If multiple pages are there you can navigate between them by clicking on page number or Next/Last – Previous/First

1, 2, 3, 4 [Next/Last]

If **Duplicate** appears on the Bill of Lading, that means it exists in another manifest file, then you have to delete it.

Correct
Duplicate

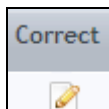
Bill of Lading Correction -Amend

Dubai Trade

5. You can take one of those actions:

➤ **Correct you Bill of Lading:**

- Click on Correct button



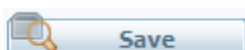
- System displays errors in this BOL

1. Invalid Origin Port Code.
2. Invalid Load Port Code.
3. Invalid Discharge Port Code.
4. Invalid Destination Port Code.
5. Invalid or no value in Trade Code. Valid values are 'I','R' or 'T'
6. Invalid Commodity Code.
7. Invalid Country Code.
8. Invalid Package Type Code.
9. Number of Packages not available.
10. Invalid Container Service Code.
11. Gross Weight Less than Cargo Weight (Net).
12. Invalid or no value in IMO Code. Error in Consignment number: 1
13. Unit of temperature not available. Error in Consignment number: 1
14. U.N. Number not available for Dangerous Goods. Error in Consignment number: 1
15. Consig commodity code does not match with BOL. Error in Consignment number: 1
16. Consignment Package code is not matching with BOL. Error in Consignment number: 1
17. Shipper's Address not Available.

- Use the tabs to navigate between: Bill of Lading Details, Consignment Details, Container Details, or Address Details to find and correct the errors.

Bill of Lading Details			
Consignment		Container	
Address			
BOL Number	48	Rotation Number	601643
Vessel Name	PEGASUS	Voyage No	0609

- After completing any of the details click on save.



- After you are done with all the details click on Confirm all.

Bill of Lading Correction -Amend

Dubai Trade



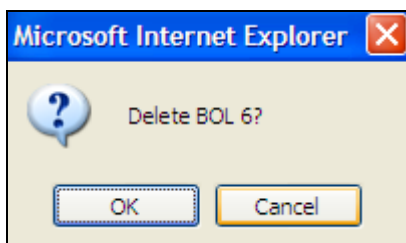
System Confirms Correction

BOL No. 68 of Rotation 601643 corrected successfully

Note: System gives you an option to delete this particular Bill of Lading from here as well.



System asks for your confirmation



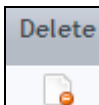
- Click on Ok

System confirms that Bill of Lading was successfully deleted

BOL No. 6 of Rotation 601643 deleted successfully

➤ Delete your Bill of Lading:

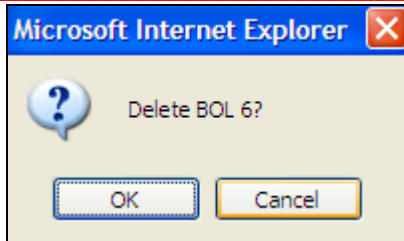
- Click on Delete



System asks for your confirmation

Bill of Lading Correction -Amend

Dubai Trade



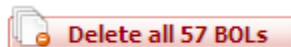
- Click on Ok

System confirms that Bill of Lading was successfully deleted

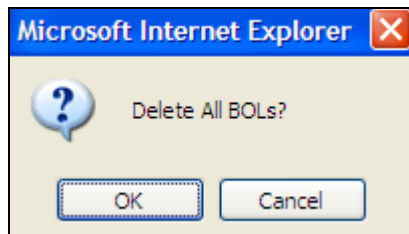
BOL No. 6 of Rotation 601643 deleted successfully

➤ Delete All Bills of Lading

- Click on Delete all xx BOLs



System asks for your confirmation



- Click on Ok

System confirms that Bills of Lading were successfully deleted